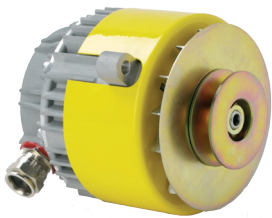


New Offshore / Marine Standards for Hazardous Locations

Engines with standard automotive alternators are a potential source of ignition, when operating in hazardous areas where combustible gas may exist.

Chalwyn offers a wide variety of flameproof alternators: standard automotive, self-exciting, and high output (12V/24V) specially built for hazardous area applications.

IP66 Rated for Harsh Environments



Standard flameproof
alternator



High output
flameproof alternators



Self-excited
flameproof alternator

New Standard for Oil & Gas Industry: ASTM F2876-10

“All electrical or electronic equipment associated with engine installations in hazardous locations shall be tested or approved and listed or certified by an independent laboratory for the Class and Group of the cargo carried or the hazardous location to the standards and protection techniques...”

Tested and Approved

All Chalwyn flameproof alternators are tested and approved to stringent standards, for use in ATEX, IECEx and NEC defined hazardous areas. Suitable for a wide range of ambient temperatures, Chalwyn alternators are an ideal choice for inland/offshore oil and gas industry.

Compact High Performance Design

Chalwyn alternator will fit in place of most standard automotive alternator configurations. The output voltage is controlled by an internal regulator with multiple harness gland connections available.

Models available

On standard automotive flameproof alternator, either “side” or “rear” cable entry option is available. Self-exciting alternators are available for mechanical engines.

Standard

- ASX-200: 12volts / 50 amp. (side entry cable)
- ASX-201: 12volts / 50 amp. (rear entry cable)
- ASX-300: 24volts / 25 amp. (side entry cable)
- ASX-301: 24volts / 25 amp. (rear entry cable)

Self-exciting

- ASX-310: 24volts / 25 amp.

High Output Standard with SAE J180 Hinge Mount

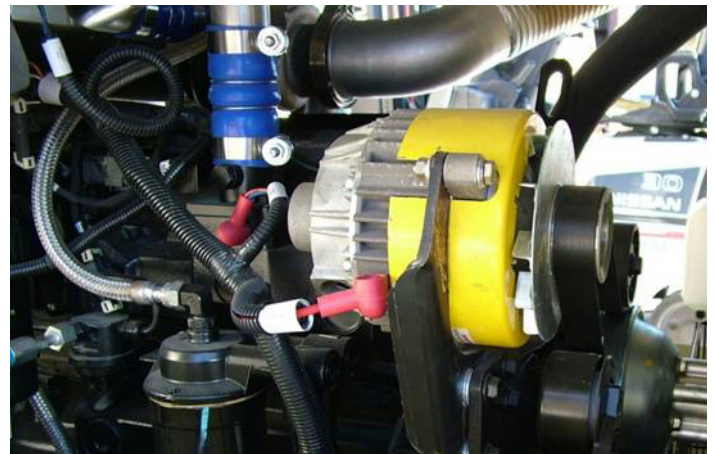
- ASX-405: 24volts / 50 amp. (side entry cable)
- ASX-406: 24volts / 50 amp. (rear entry cable)

Detailed datasheets are available upon request.

Pulley Selection

Multiple pulley selection are available to accommodate different alternator speeds.

Contact your local distributor to determine the correct pulley.



Contact us for more information

Americas

AMOT Americas
8824 Fallbrook Dr.
Houston, TX 77064
Tel: +1 (281) 469 3377
sales@amot.com

AMOT Canada
3230 - 97 Street
Edmonton, Alberta
Canada T6N 1K4
Tel: +1 (780) 465 4429
info@rodadeaco.com

Asia Pacific

AMOT Shanghai
RM 4102, United Plaza
1468 Nanjing Road West
Shanghai 200030 China
Tel +86 0 21 6279 7700
shanghai@amot.com

AMOT SE Asia
10 Eunos Road 8 #12-06
Singapore Post Centre
Singapore 408600
Tel: +65 (0) 6408 6265
singapore@amot.com

Europe, Middle East & Africa

AMOT UK
Western Way
Bury St Edmunds
Suffolk IP 33 3SZ England
Tel: +44 (0) 1284 762222
sales@chalwyn.com

AMOT Germany
Rondenbarg 25
22525 Hamburg
Germany
Tel: +49 (40) 8537 1298
germany@amot.com